



John Shors
President and Founder
John Shors Travel

3038853885

john@johnshorstravel.com
<https://www.johnshorstravel.com>



2026: Japan Garden Tour with The Dallas Arboretum

Sep 20, 2026 - Sep 29, 2026

Trip Summary

September 20 - DAY 1: SUNDAY

Arrive at Tokyo International Airport (NRT or Haneda) - Narita International Airport

Check into our hotel - The Prince Park Tower Tokyo (ザ・プリンス パークタワー東京)

6:30 p.m. Dinner - Tsukune Yamamoto

September 21 - DAY 2: MONDAY

Enjoy a buffet breakfast at the hotel

10:30 a.m. Meet in the hotel lobby - Shinjuku Gyoen National Garden

12:30 p.m. Lunch

2 p.m. Tokyo Digital Art Museum - MORI Building DIGITAL ART MUSEUM: EPSON teamLab Borderless (チームラボ デジタルアートミュージアム ボーダレス)

3:30 p.m. Return via taxis to our hotel and enjoy free time

6:30 p.m. Dinner

September 22 - DAY 3: TUESDAY

Enjoy a buffet breakfast at the hotel

Check out from The Prince Park Tower Tokyo hotel

9 a.m. Depart for Tokyo Station - Tokyo Station (東京駅)

10:30 a.m. Board a Bullet Train, bound for Kyoto

12 p.m. Lunch

1:30 p.m. Arrive in Kyoto - Sate Kyoto

Check in at Cross Hotel Kyoto - Cross Hotel Kyoto

3 p.m. Tour of the Fushimi Inari Shrine - Fushimi Inari Taisha

5:30 p.m.

6:30 p.m. Dinner

September 23 - DAY 4: WEDNESDAY

Enjoy a buffet breakfast at the hotel

9:30 a.m. Depart for Kyoto's most famous gardens

10 a.m. Arrive at Nanzenji Temple - Nanzen-ji

Visit Tenjyuan Garden

12:30 p.m. Lunch

2 p.m. Depart for Heian Jingu Shrine - Heian Shrine

Enjoy a guided tour of Heian Jingu Shrine

4 p.m. Arrive back at the hotel to enjoy some free time

6:30 p.m. Dinner

September 24 - DAY 5: THURSDAY

Enjoy a buffet breakfast at the hotel

10 a.m. Depart for Arashiyama - Arashiyama Nakaoshitacho

10:30 a.m. Enjoy a ride in a traditional Japanese rickshaw

12 p.m. Lunch - Shigetsu (篩月)

1:45 p.m. Visit the garden at Tenryuji Temple

2 p.m. Walk up nearby "Monkey Mountain"

4 p.m. Return to the hotel and enjoy free time.

6:30 p.m. Dinner

September 25 - DAY 6: FRIDAY

Enjoy a buffet breakfast at the hotel

10 a.m. Depart for Nijo Castle - Nijo-jo Castle (二条城)

12 p.m. Lunch - Ganko (かんこ 高瀬川二条苑)

1:30 p.m. Visit Saiho-ji Temple - Saihō-ji Temple

4 p.m. Return to the hotel for free time

6:15 p.m. Dinner - Fortune Garden Kyoto (フォーチュンガーデン京都)

September 26 - DAY 7: SATURDAY

Enjoy a buffet breakfast at the hotel

9 a.m. Enjoy free time

10 a.m. Walk to Nishiki Market - Nishiki Market (錦市場)

12 p.m. Lunch

1:30 p.m. Visit Kinkaku-ji Temple - Kinkaku-ji

3:30 p.m. Arrive back at our hotel and enjoy free time

6:30 p.m. Dinner

September 27 - DAY 8: SUNDAY

Enjoy a buffet breakfast at the hotel

Enjoy private, individual free time to further explore the local area.

11 a.m. Check out from Cross Hotel Kyoto - Cross Hotel Kyoto

12 p.m. Lunch

2 p.m. Depart for Osaka

3 p.m. Check in at Swissôtel Nankai Osaka - Swissôtel Nankai Osaka

Enjoy free time

6:30 p.m. Walk to Dotonbori - Dotonbori

7 p.m. Dinner - Shirokiya

September 28 - DAY 9: MONDAY

Enjoy a buffet breakfast at the hotel

9:15 a.m. Depart for Sushi Making Class

11:30 a.m. Lunch

12:30 p.m. Depart via taxis for Osaka Castle - 大阪キャッスルホテル

3:30 p.m. Return to the hotel for free time

6 p.m. Farewell Dinner

September 29 - DAY 10: TUESDAY

Enjoy a buffet breakfast at the hotel

Check out from Swissôtel Nankai Osaka - Swissôtel Nankai Osaka

Tour with John Shors Travel officially concludes - Kansai International Airport

September 20 - DAY 1: SUNDAY



Arrive at Tokyo International Airport (NRT or Haneda)

- Fly into Tokyo's Narita International Airport (NRT); flights usually arrive in the late afternoon.
- Each individual traveler or family of travelers will have a reservation for a complimentary, private car that will drive them from Narita Airport to our hotel in downtown Tokyo (Note: Since Narita Airport is far outside of Tokyo, this drive will take about 70 minutes).
- We will check into our hotel. Options include the 5-star Prince Park Tower Tokyo, InterContinental Tokyo Bay, or equivalent.



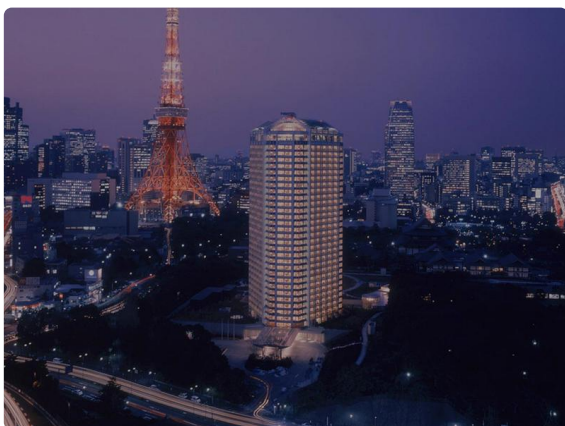
Narita International Airport

Narita, CHIBA PREFECTURE, JP, 282-0004
0476-34-8000



Check into our hotel

We will check into our hotel, options include the five-star The Prince Park Tower Tokyo, InterContinental Tokyo Bay, or equivalent.



The Prince Park Tower Tokyo (ザ・プリンス パークタワー東京)

芝公園4-8-1, 東京, 東京都, 日本, 105-8563
+81 3-5400-1111



6:30 p.m. Dinner

- Meet in the hotel's lobby, and walk to a nearby restaurant for dinner.
- *Note: If guests wish to arrive one day earlier, so that they may relax for a full day before the tour starts, they may do so. Anyone arriving one day early will still have complimentary airport pickup, but will be on their own for September 19th in terms of activities, and will be charged for an extra night at the hotel.*



Tsukune Yamamoto
Minato City 4, Tokyo, JP, 105-0004

September 21 - DAY 2: MONDAY



Enjoy a buffet breakfast at the hotel



10:30 a.m. Meet in the hotel lobby

Depart via taxis for Shinjuku Gyoen National Garden. This is one of the largest parks in Japan. Created in 1603, the park features an immense Japanese landscape garden, as well as a French garden, an English garden, and a green house.



Shinjuku Gyoen National Garden

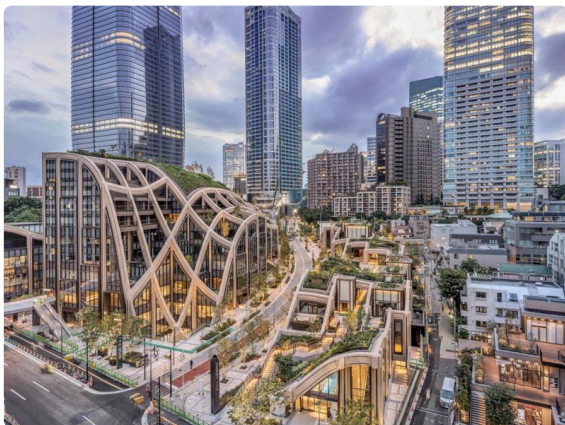
Shinjuku, TOKYO, JP, 160-0014
03-3350-0151

国民公園（環境省管轄）



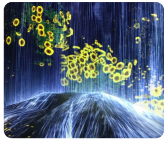
12:30 p.m. Lunch

- After taking a walking tour of this garden, we will take taxis to the Mori Building in Azabudai Hills.
- 12:30 p.m. We will enjoy lunch within the Mori Building.



2 p.m. Tokyo Digital Art Museum

We will have tickets to the spectacular Tokyo Digital Art Museum, also known as teamLab Planets. This amazing museum features stunning, digital gardens:



MORI Building DIGITAL ART MUSEUM: EPSON teamLab Borderless (チームラボ デジタルアートミュージアム ボーダレス)

1-3-8 お台場パレットタウン, 東京, 東京都, 日本, 135-0064



3:30 p.m. Return via taxis to our hotel and enjoy free time



6:30 p.m. Dinner

Guests will be on their own for dinner tonight. There are good restaurants close to the hotel, and the hotel contains multiple restaurants, as well as a bar with a wonderful view of Tokyo Tower.

September 22 - DAY 3: TUESDAY



Enjoy a buffet breakfast at the hotel



Check out from The Prince Park Tower Tokyo hotel



9 a.m. Depart for Tokyo Station

Meet in the hotel lobby, with bags, and take taxis to Tokyo Station.



Tokyo Station (東京駅)

丸の内1, 千代田区, 東京都, 日本, 100-0005



10:30 a.m. Board a Bullet Train, bound for Kyoto

If we have a clear day, we'll get a great view of Mt. Fuji.



12 p.m. Lunch

Eat a simple box lunch on the Bullet Train.

Note, this will be a light lunch.



1:30 p.m. Arrive in Kyoto

Arrive in Kyoto, a city of more than 2,000 temples and shrines; and countless gardens.



Sate Kyoto

Senkom Kyoto, 日本

Check in at Cross Hotel Kyoto



Meet up with our local guide, and take taxis to our hotel, the four-star Cross Hotel Kyoto. It is a new hotel, and it is located in the city's center near many attractions, restaurants, and stores. The Cross Hotel Kyoto is perfectly situated for exploring the city by foot. Check into rooms, if possible. If not, leave our bags at the front desk.



Cross Hotel Kyoto

71-1 Daikoku-cho, Kyoto, Japan



3 p.m. Tour of the Fushimi Inari Shrine

- 3 p.m. Depart via local train, with our local guide, and enjoy a guided tour of the legendary Fushimi Inari Shrine, a UNESCO World Heritage Site.
- Comprising thousands of "tori" gates, this shrine goes deep into a lush forest.



Fushimi Inari Taisha

Fushimi Ward, KYOTO PREFECTURE, JP, 612-0882
075-641-7331



5:30 p.m.

Return to our hotel in the city's center, and enjoy free time.



6:30 p.m. Dinner

Meet in the hotel lobby, and walk to a local restaurant positioned in one of Kyoto's famous alleyways.

September 23 - DAY 4: WEDNESDAY



Enjoy a buffet breakfast at the hotel



9:30 a.m. Depart for Kyoto's most famous gardens

Meet in the hotel lobby and depart via taxis to see some of Kyoto's most famous gardens.



10 a.m. Arrive at Nanzenji Temple

- Arrive at Nanzenji Temple, which was built in the early 13th Century, and is one of the most famous Zen temples in Japan. Nanzenji has numerous gardens, including some very special rock gardens.
- Accompanied by a Japanese garden expert, we will tour the grounds of Nanzenji, exploring a variety of gardens.



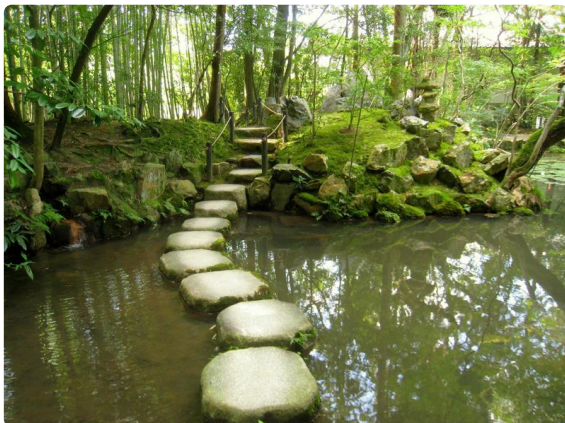
Nanzen-ji

京都市, 京都府, JP, 606-8435
+81 75-771-0365



Visit Tenjyuan Garden

While still on the temple grounds, we will visit the famous Tenjyuan Garden. This ancient, lush garden is full of many features. Our local garden expert will give us a tour of this quiet garden:



12:30 p.m. Lunch

We will enjoy lunch at a local restaurant.



2 p.m. Depart for Heian Jingu Shrine

We will take taxis, a short distance, to Heian Jingu Shrine, one of Kyoto's most famous landmarks. The entrance to Heian Jingu Shrine:



Heian Shrine

Okazaki Nishitennocho Sakyo Ward , 京都市, KYOTO PREFECTURE, JP, 606-8341
075-761-0221

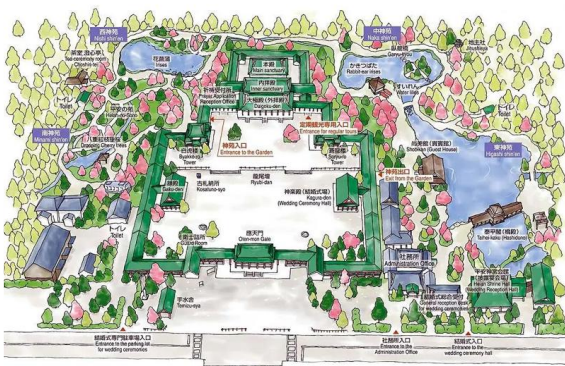


Enjoy a guided tour of Heian Jingu Shrine

- Heian Jingu Shrine is also home to one of the city's most famous gardens, Shin-en, which translates into “Garden of the Gods”. This eight-acre garden features countless trees, plants, flowers, and water features.
- We'll enjoy a guided tour of this massive, beautiful, and quiet garden.

A map of the garden:

平安神宮境内図



4 p.m. Arrive back at the hotel to enjoy some free time



6:30 p.m. Dinner

Guests will be on their own for dinner tonight. Hundreds of restaurants are within a square mile of our hotel.

September 24 - DAY 5: THURSDAY



Enjoy a buffet breakfast at the hotel



10 a.m. Depart for Arashiyama

Meet in the lobby and depart via taxis for Arashiyama, a picturesque part of Kyoto. Arashiyama:



Arashiyama Nakaoshitacho

Nishikyo Ward Kyoto , Kyoto Prefecture, JP, 616-0004



10:30 a.m. Enjoy a ride in a traditional Japanese rickshaw

- Enjoy a 30-minute ride through a famous bamboo forest in a traditional Japanese rickshaw.
- Spend time walking around the area or rowing on the nearby lake in small boats.



12 p.m. Lunch

Enjoy lunch at Shigetsu restaurant, which is famous for its Zen Buddhism food (vegetarian) and is located inside the famous Tenryuji Temple grounds.



Shigetsu (篩月)

嵯峨天龍寺芒ノ馬場町68, 京都府, 日本, 616-8285

+81 75-882-9725



1:45 p.m. Visit the garden at Tenryuji Temple

After lunch, enjoy the grounds and wonderful garden at Tenryuji Temple, which features one of the city's most famous rock gardens:



2 p.m. Walk up nearby “Monkey Mountain”

Guests may continue to explore the area (which has great shopping), return to the hotel via taxis for free time, or walk up nearby “Monkey Mountain”. This is about a 20-minute hike, each way, and at the top of the mountain are many wild monkeys. The summit offers not only views of the monkeys, but a great view of the city.



4 p.m. Return to the hotel and enjoy free time.



6:30 p.m. Dinner

Guests will be on their own for dinner tonight.

September 25 - DAY 6: FRIDAY



Enjoy a buffet breakfast at the hotel



10 a.m. Depart for Nijo Castle

- Meet in the hotel lobby, and depart via taxis with our guide, for Nijo Castle and enjoy a guided tour. Nijo has a wonderful traditional Japanese garden. It is also a UNESCO World Heritage Site, famous for its stunning architecture and historical significance as the residence of Tokugawa shoguns.
- On the Nijo Castle grounds, see a famous Eucalyptus Melliodora tree, which was planted from one of the seeds from one of the few trees that survived the atomic bomb at Hiroshima.



Nijo-jo Castle (二条城)

中京区二条城町541, 京都市, 京都府, 日本, 604-8301

+81 75-841-0096



12 p.m. Lunch

Enjoy lunch at Ganko Nijo, near Nijo Castle.



Ganko (がんこ 高瀬川二条苑)

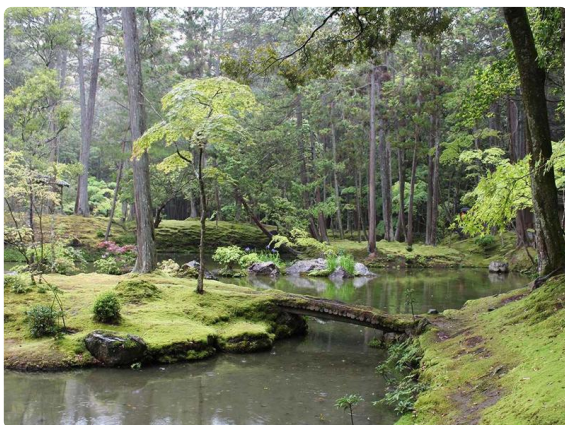
中京区木屋町通二条下ル東生洲町484-6, 京都市, 京都府, 日本, 604-0922

+81 75-223-3456



1:30 p.m. Visit Saiho-ji Temple

Take taxis to Saiho-ji Temple, which features one of the most famous gardens in the world. This temple, because of its moss-dominated garden, is often called the Moss Temple:



Saihō-ji Temple

右京区 京都市 1, 京都府, JP, 616-8218

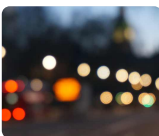


4 p.m. Return to the hotel for free time



6:15 p.m. Dinner

Meet in the hotel lobby and walk to the nearby Fortune Garden Kyoto, which is one of the city's best restaurants and is located next to a Zen garden. This restaurant serves French food in addition to Japanese dishes. Guests may enjoy time in the Zen garden prior to eating.



Fortune Garden Kyoto (フォーチュンガーデン京都)

中京区一之船入町386-2, 京都市, 京都府, 日本, 604-0924

+81 75-254-8843

September 26 - DAY 7: SATURDAY



Enjoy a buffet breakfast at the hotel



9 a.m. Enjoy free time

Enjoy free time to explore the area (there is great shopping nearby, as well as a wonderful river walk)



10 a.m. Walk to Nishiki Market

Meet in the lobby and walk about ten minutes to Nishiki Market. This market, founded in the year 1310, offers fresh seafood, meats, vegetables, and fruits to locals.



Nishiki Market (錦市場)

中京区西大文字町609, 京都市, 京都府, 日本, 604-8054
+81 75-211-3882



12 p.m. Lunch

Have lunch at nearby restaurant.



1:30 p.m. Visit Kinkaku-ji Temple

Take taxis to the UNESCO World Heritage Site, Kinkaku-ji Temple. Tour the extensive temple grounds, as well as its stunning gardens. Kinkaku-ji Temple:



Kinkaku-ji

Kita Ward, KYOTO PREFECTURE, JP, 603-8361
075-461-0013



3:30 p.m. Arrive back at our hotel and enjoy free time



6:30 p.m. Dinner

Guests will be on their own for dinner tonight.

September 27 - DAY 8: SUNDAY



Enjoy a buffet breakfast at the hotel



Enjoy private, individual free time to further explore the local area.

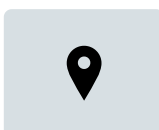
Options include:

- Shopping at countless nearby stores
- Talking a walk along the nearby Kamogawa River
- Exploring nearby neighborhoods on foot
- Visit a quiet temple.



11 a.m. Check out from Cross Hotel Kyoto

Leave bags in the lobby.



Cross Hotel Kyoto

71-1 Daikoku-cho, Kyoto, Japan



12 p.m. Lunch

Today's lunch will be independent. There are countless great lunch spots near our hotel.



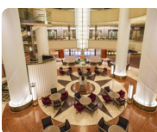
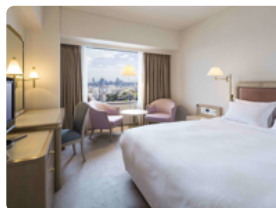
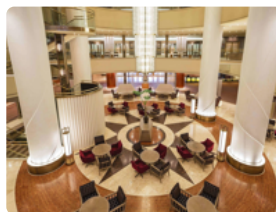
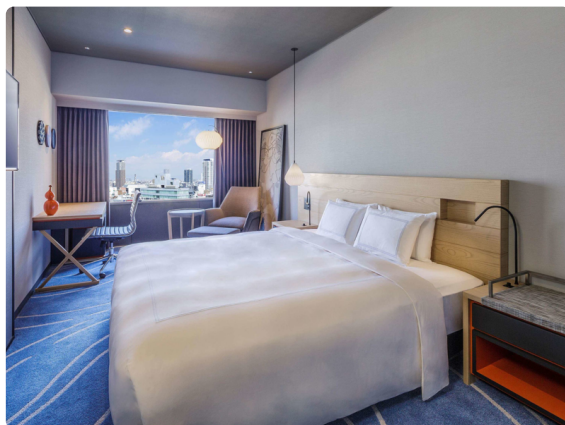
2 p.m. Depart for Osaka

We will have a private van and driver take us from Kyoto to Osaka. This drive will take about one hour.



3 p.m. Check in at Swissôtel Nankai Osaka

Check into our five-star hotel, the Swissotel Nankai Osaka, which is a high-rise hotel that offers amazing views of the city:



Swissôtel Nankai Osaka

5-1-60 Namba, Osaka, Japan



Enjoy free time



6:30 p.m. Walk to Dontonbori

Meet in the hotel lobby and walk to Dontonbori, one of the most famous pedestrian malls in the world, which is known for its countless street food stalls:

**Dotonbori**

Dotonbori Chuo Ward , Chuo Ward, Osaka Prefecture, JP, 542-0071

**7 p.m. Dinner**

After walking around Dotonbori, and seeing all of the countless food offerings, enjoy dinner at a seafood restaurant.

**Shirokiya**

Kita Ward Osaka 3, Osaka, JP, 530-0013

September 28 - DAY 9: MONDAY



Enjoy a buffet breakfast at the hotel



9:15 a.m. Depart for Sushi Making Class

Meet in the hotel lobby and depart, via two private vans, for a private sushi-making class with Cooking Sun.



11:30 a.m. Lunch

We will learn to make several different kinds of sushi rolls, which we will then eat for lunch.



12:30 p.m. Depart via taxis for Osaka Castle

Tour Osaka Castle, it's lovely gardens, and the surrounding area.



大阪キャッスルホテル

天満橋京町1-1, 大阪市, 大阪府, JP, 540-0032

06-6942-2401



3:30 p.m. Return to the hotel for free time



6 p.m. Farewell Dinner

Meet at one of the hotel's restaurants for a farewell dinner.

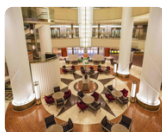
September 29 - DAY 10: TUESDAY



Enjoy a buffet breakfast at the hotel



Check out from Swissôtel Nankai Osaka



Swissôtel Nankai Osaka

5-1-60 Namba, Osaka, Japan



Tour with John Shors Travel officially concludes

There is a high-speed train that departs below our hotel and heads directly to Osaka airport (Kansai International Airport – KIX). A ticket and instructions will be provided for each guest for this train, and groups of guests will be accompanied by John or another guide.



Kansai International Airport

Senshukukokita Izumisano 1, 泉佐野市, OSAKA PREFECTURE, JP, 549-0001

+81 72-455-2500

Tour Information & Pricing



PRICE OF TOUR:

- \$9,245 USD per person (based on double occupancy)
- \$11,245 USD per person (based on single occupancy)

Some details, like restaurants may change, but quality will be the same

PRICE INCLUDES:

- Accommodations at two five-star hotels (Tokyo and Osaka) and one four-star hotel (Kyoto)
- All transportation within Japan
- Most meals and non-alcoholic drinks
- Fees (temples, tours, guides, etc.)
- Excursions (rickshaw ride, cooking class, etc.)
- All tips

PRICE DOES NOT INCLUDE:

- International airfare to Tokyo and returning from Osaka
- Alcoholic drinks
- Activities during free times
- Hotel incidentals such as room service, mini bar, Internet and phone charges, laundry, etc.



Additional notes:

- John Shors will accompany the group for the entire trip. The maximum size for any group is 18 guests, plus guides
- Exact tour details may differ slightly from what is listed above, depending on recommendations from local guides; as restaurants close, streets are refurbished, etc.
- This trip includes walks of up to one mile, and over uneven terrain
- To reserve a spot for this tour, a \$2,000 nonrefundable, per person, deposit is due to John Shors Travel by February 1, 2026
- This tour will be filled up on a first-come, first-serve basis



Travel Insurance Recommendation

We strongly recommend purchasing travel insurance for your trip. For your convenience, you can explore options from our trusted travel insurance partner [here](#).